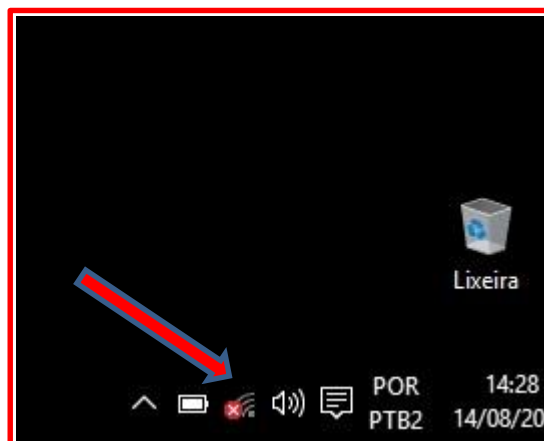


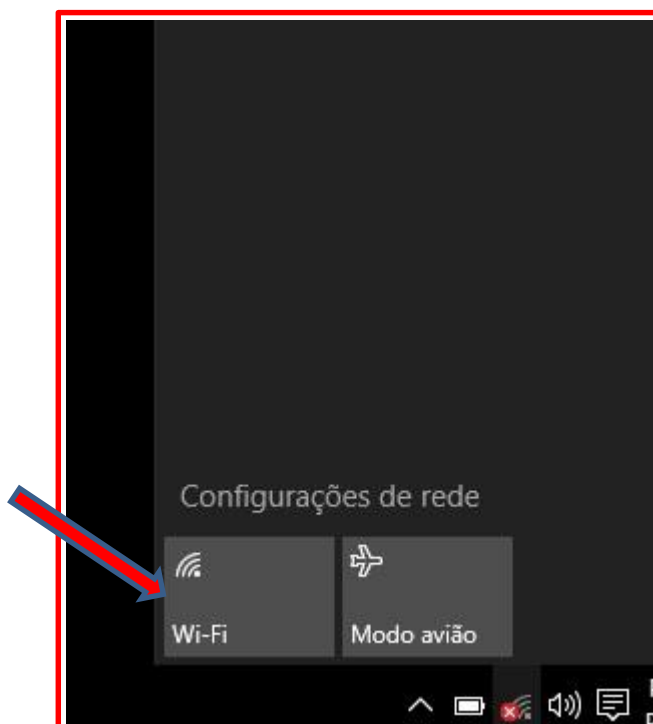


## CONFIGURAÇÃO DA REDE WI-FI PUC MICROSOFT WINDOWS 10

1. Na tela inicial, clique sobre o ícone de redes, no canto inferior direito.  
*On the start screen click under network icon.*

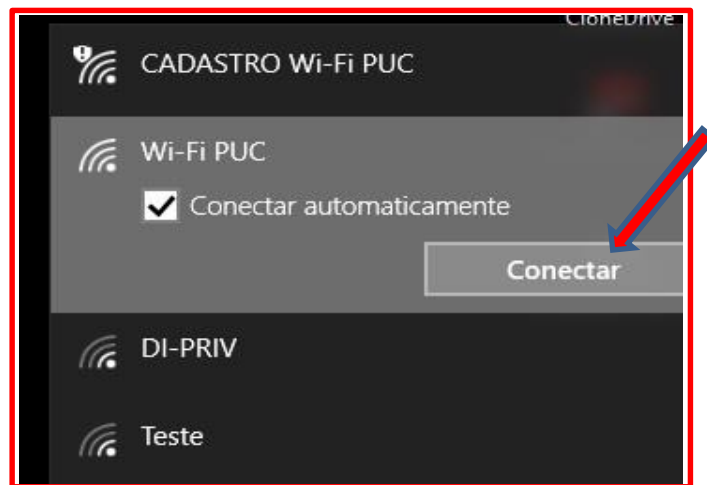


2. Clique sobre a rede “Wi-Fi”, caso não apareça as redes disponíveis.  
*Click on the “Wi-Fi”, if you cannot see the available networks.*



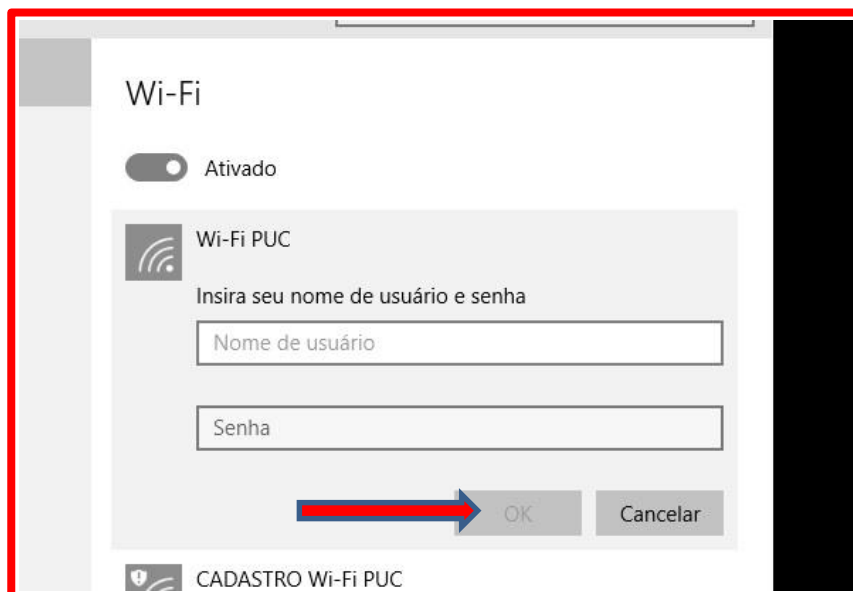
3. Escolha a rede “Wi-Fi PUC”, marque a opção “Conectar automaticamente” e depois clique em “Conectar”.

Select the “Wi-Fi PUC” network and check the option “Connect Automatically” e then click “Connect”.



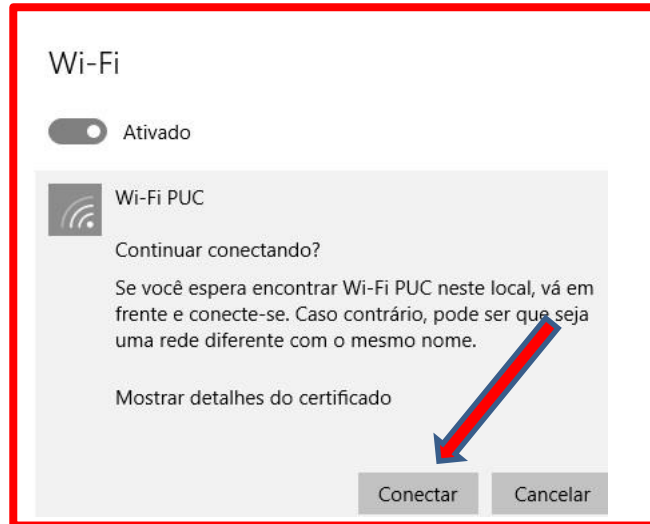
4. Insira seu Login e senha da rede “Wi-Fi PUC”, depois clique em “Ok”.

Insert your login e password from “Wi-Fi PUC” and then click “Ok”.



5. Na próxima tela, clique em “Conectar”.

On the next screen, click “Connect”.



6. Aguarde até a conexão estar estabelecida.

That is all. Wait for the connection.

### **AVISO**

**É proibido o uso de programas de troca de arquivos do tipo *Peer-to-Peer* (P2P), entre eles, mas não somente, Bittorrent, Emule, Edonkey, Gnutella, Kazaa, iMesh, etc.**

**A violação desta política sujeita o usuário a suspensão de acesso à rede “Wi-Fi PUC”.**

### **WARNING**

**It's strictly forbidden the usage on any *Peer-to-Peer* (P2P) file sharing service in the Wi-Fi PUC network, including, but not only, Bittorrent, Emule, Edonkey, Gnutella, Kazaa, iMesh, etc.**

**Violating this policy is subject to access suspension to the “Wi-Fi PUC” network.**

Detalhes técnicos

Autenticação: PEAP/EAP-MSCHAPv2

---